

CODE SUMMARY.

STORIES: 3 STORIES
 AREA: 58,211 SF (FOOTPRINT)
 BUILDING CODE: IBC 2020 / ALTERATIONS LEVEL II
 PREVIOUS OCCUPANCY: B - BUSINESS
 OCCUPANCY CLASS: B - BUSINESS PROPOSED (UNCHANGED)
 CONSTRUCTION TYPE: TYPE IIB CONSTRUCTION
 SCOPE OF WORK: INTERIOR BUILD-OUT AT PARTIAL 3RD FLOOR
 ASSOC. WORK AREA: 15,920 SF

FIRE RESISTANCE RATINGS

STRUCTURAL, FRAME	0 HR (EXISTING)
EXTERIOR BEARING WALLS	0 HR (EXISTING)
INTERIOR BEARING WALL	0 HR
EXTERIOR NON BEARING WALLS & PARTITIONS	0 HR
FLOOR CONSTRUCTION	0 HR (EXISTING)
FIRE WALLS	2 HR (EXISTING)
SHAFT ENCLOSURES	2 HR
SMOKE BARRIERS	2 HR
FIRE PARTITIONS/CORRIDORS	0 HR

AUTOMATIC SPRINKLER SYSTEM :
 (EXISTING) FULLY SPRINKLERED NFPA 13

PORTABLE FIRE EXTINGUISHERS:
 PROVIDE (1) PER 75' WITH FINAL QUANTITIES AND LOCATIONS TO BE REVIEWED BY FIRE MARSHALL. (2) PROVIDED - REFER TO PLAN

OCCUPANT LOAD : **THIRD FLOOR (FTS SPACE)** = 15,920 / 150 = 106 OCCUPANTS

EXITS : 2 EXITS REQUIRED / 2 EXITS PROVIDED

EXIT TRAVEL DISTANCE: REQUIRED = 300' MAX PROPOSED = 187' MAX LENGTH

EGRESS CAPACITY : DOORS 36"

PLUMBING FIXTURES: REQUIRED WATER CLOSETS > 1/25 FOR FIRST 50 = 3 MALE / 3 FEMALE
 PROVIDED = 3 MALE / 3 FEMALE

LAVATORY > 1/25 FOR AFTER 50 = 2 MALE / 2 FEMALE
 > 1/25 FOR FIRST 80 = 2 MALE / 2 FEMALE

SERVICE SINK - (1) REQUIRED / (1) PROVIDED
 DRINKING FOUNTAIN - (2) REQUIRED / (2) PROVIDED

ACCESSIBILITY: 1 ACCESSIBLE ENTRY PROVIDED AT GROUND FLOOR

ENERGY: REFER TO COMCHECK FOR NEW INTERIOR LIGHTING AND MECHANICAL SYSTEMS POWER.

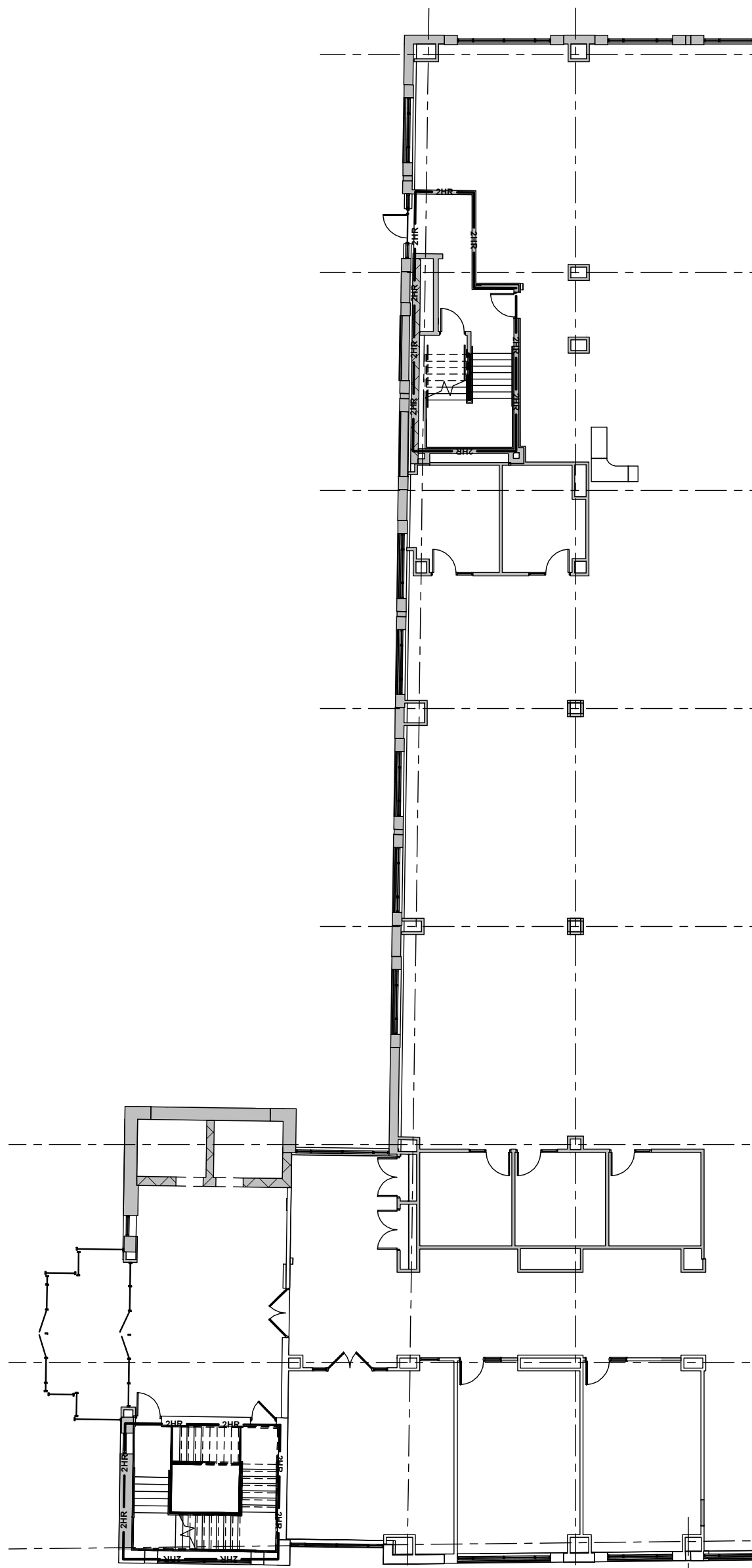
// REFER TO FLOOR PLANS FOR PARTITION TYPES AND ASSOCIATED FIRE-RATED ASSEMBLY.

FIRE PROTECTION SYMBOL LEGEND.

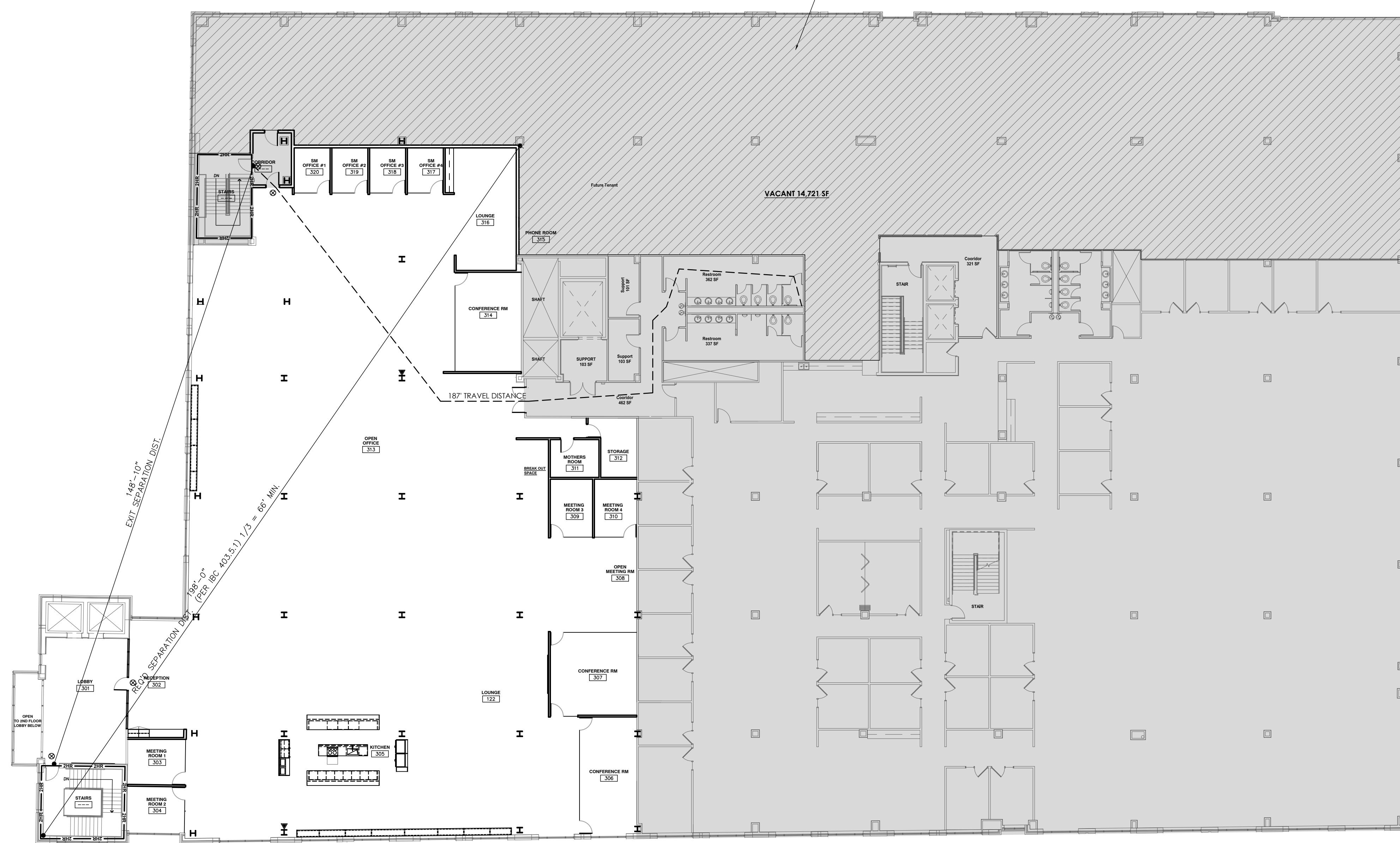
- | | | | |
|-------------|----------------------------|------|--------------------------------------|
| (S) | SMOKE DETECTOR | FACP | FIRE ALARM CONTROL PANEL |
| (H) | HEAT DETECTOR | FAA | FIRE ALARM ANNUNCIATOR |
| (F) | FIRE ALARM PULL STATION | (FS) | FIRE ALARM - SPRINKLER FLOW SWITCH |
| (F) | FIRE ALARM AUDIO/VISUAL | (TS) | FIRE ALARM - VALVE TAMPER SWITCH |
| (DD) | DUCT SMOKE DETECTOR | (C) | CARBON MONOXIDE DETECTOR |
| (F) | FIRE ALARM VISUAL (STROBE) | (X) | EXIT SIGN ABOVE W/ BATTERY BACKUP |
| EXIT ACCESS | PATH OF EGRESS EXIT ACCESS | (E) | EMERGENCY LIGHTING W/ BATTERY BACKUP |
| | | (F) | FIRE EXTINGUISHER CABINET |

LIFE SAFETY LEGEND.

- | | |
|-----|------------------------|
| --- | SMOKE PARTITION |
| --- | SMOKE BARRIER |
| --- | 20 MINUTE FIRE BARRIER |
| --- | 1/2 HOUR FIRE BARRIER |
| --- | 1HR FIRE BARRIER |
| --- | 2HR FIRE BARRIER |
| --- | TRAVEL DISTANCE |



2 PARTIAL FIRST FLOOR LIFE SAFETY PLAN
 SCALE: 1/16" = 1'-0"



1 PARTIAL THIRD FLOOR LIFE SAFETY PLAN
 SCALE: 1/16" = 1'-0"

34 ELTON ST
 ROCHESTER NY 14607
 www.fortifiedfire.com
 585-330-1746

THIS IS A SINGLE SHEET OF A COHESIVE SET OF CONSTRUCTION DOCUMENTS (INCLUDING DRAWINGS & SPECIFICATIONS). INTERPRETATION OF THE INFORMATION AS PRESENTED SHOULD BE BASED ON THE ENTIRE SET OF DOCUMENTS.

PROJECT TITLE:
FAST TRACKING SOLUTIONS OFFICE BUILD-OUT

SENECA BUILDING
 245 E MAIN ST
 ROCHESTER, NY 14604

PROJECT #: 036.4
 ISSUE DATE: 4-5-2022
 DRAWN BY: MTC
 MANAGER: MTC

REVISIONS:

SHEET CONTENTS:
3RD FLOOR LIFE SAFETY PLAN

SHEET NO.: **LS100**
 -- PERMIT SET --